

proofSIGN

...verifies your proofs

manual

Installation

Mac

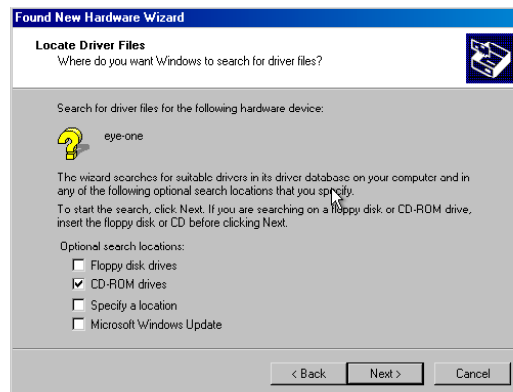
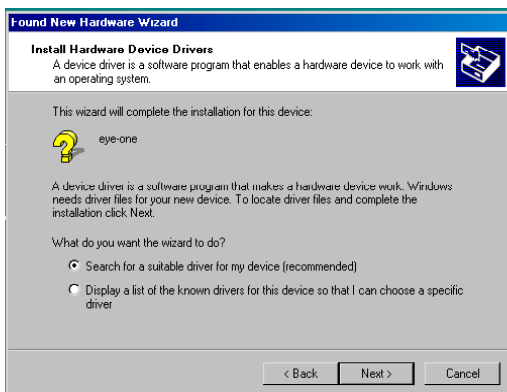
Copy the proofSIGN application into your Applications Folder

Windows

If the CD doesn't auto launch, then double click on proofSIGN_Setup.exe to start the installation procedure. If you get a warning about proofSIGN not having a Microsoft digital signature, then click Continue and complete the installation procedure.

Eye-One Driver for Windows

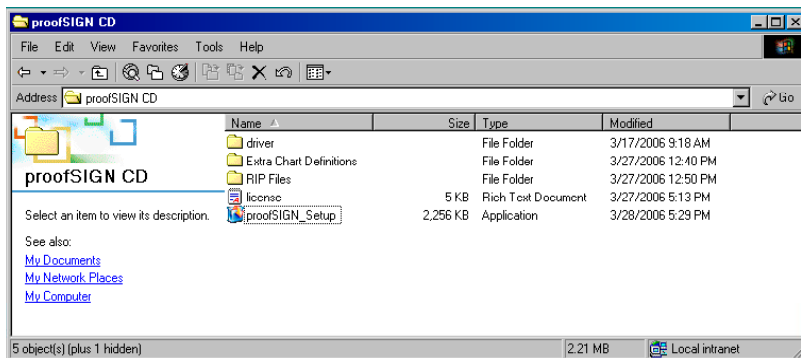
If you have never used an Eye One on the computer you have installed proofSIGN, then when you first plug in the Eye-One you will be asked for the driver.



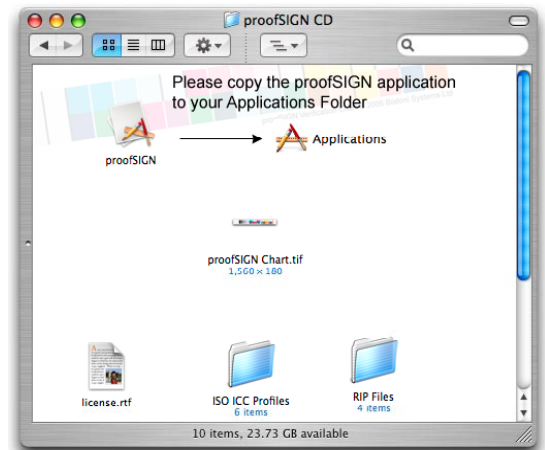
Make sure the proofSIGN CD is in the drive and follow the onscreen instructions.

What's on the CD

As well as the application, or installer, there are several files and folders included on the CD.



Contents of the Windows CD



Contents of the Mac CD

- | | |
|----------------------|--|
| proofSIGN Chart.tif | - This is the verification chart. Add this file at the bottom of every print |
| RIP Files | - Instructions and files needed for specific RIPs |
| license.rtf | - End User License Agreement. |
| driver | - Windows Eye-One Driver (Windows CD only) |
| proofSIGN_Setup.exe | - Windows installer (Windows CD Only) |
| proofSIGN | - Mac application (Mac CD Only) |
| proofSIGN Manual.pdf | - This manual |
| ISO ICC Profiles | - ICC Profiles of the ISO Standards proofSIGN verifies to. |

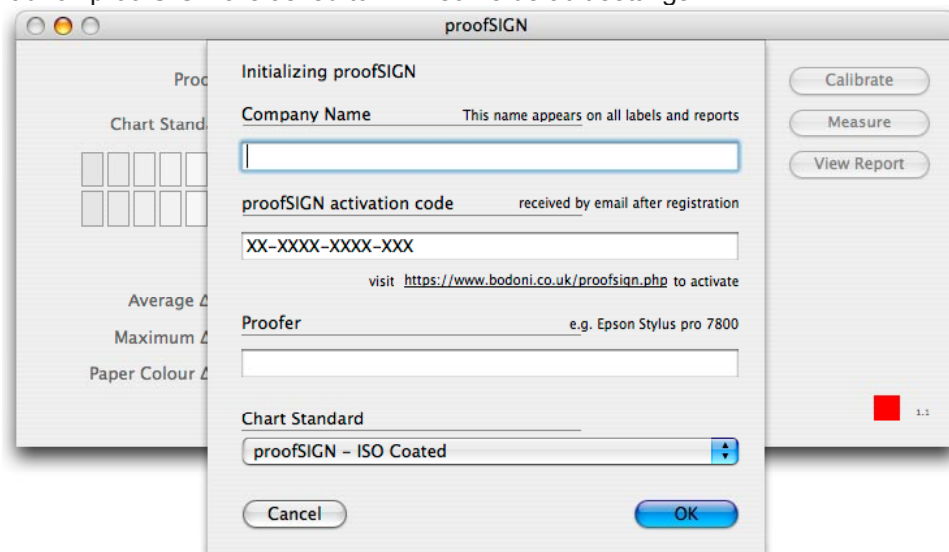


Activating proofSIGN

Launching proofSIGN

Connect the Eye One to the computer before launching proofSIGN

The first time you launch proofSIGN are asked to fill in some default settings.



The proofSIGN activation code is generated online by visiting <https://www.bodoni.co.uk/proofsign.php>. If the computer you are installing proofSIGN on is connected to the internet, then you can click on the URL link just below the area which asks for the activation code. The code that needs to be typed in here IS NOT the code that is within the CD Case.

Fill in the name of the proofer you are using. This could just be the name of the printer, or printer & paper combination.

Fill in your company name. This is printed on every label and PDF report. The company name can be changed later in the preferences.

Filling in the activation information

Use a browser to open <https://www.bodoni.co.uk/proofsign.php>

<https://www.bodoni.co.uk/proofsign.php>

Fill in the details as requested. If the Eye-One serial number wasn't filled in automatically, you can find the serial number on the calibration plate of the Eye-One.

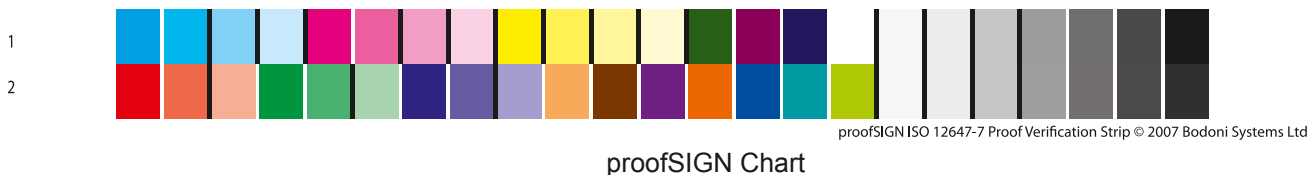
When you receive the activation email, type in your activation code as given into proofSIGN. This activation code is per Eye-One. Each additional Eye-One you wish to use with proofSIGN requires another proofSIGN license.



Using proofSIGN

Printing the proofSIGN Chart

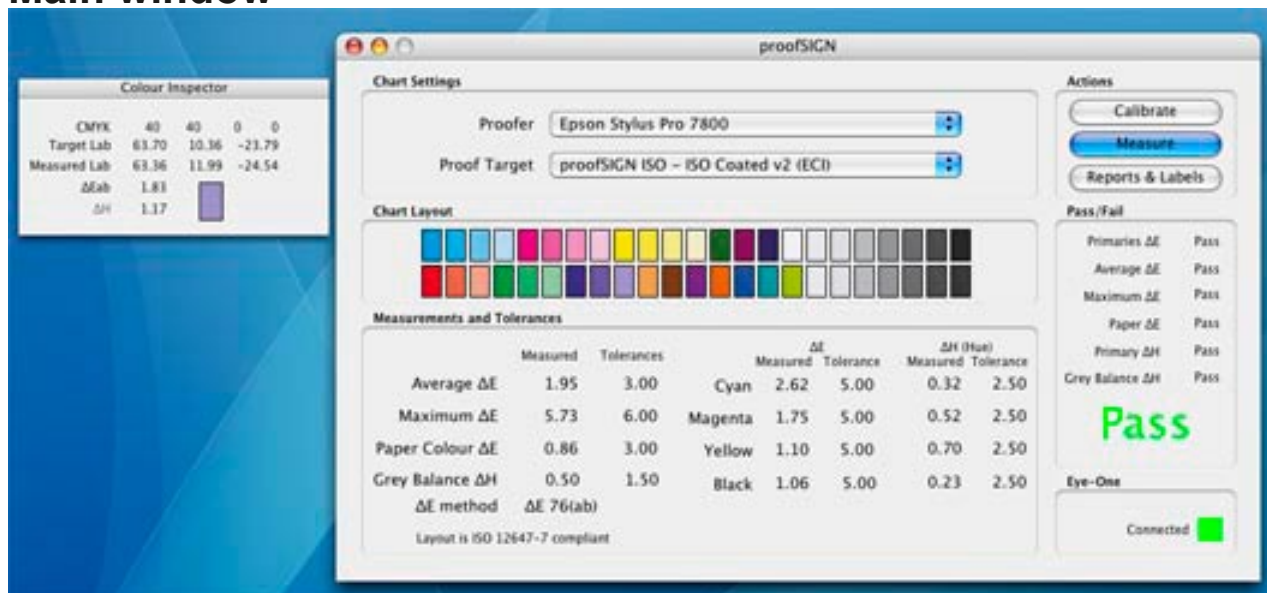
Included on the proofSIGN CD is 'proofSIGN Chart.tif'. This is the chart layout file that needs to be included on each proof so that you can use proofSIGN to verify the proof. Make sure the chart has the same colour management applied as the main job.



Using proofSIGN with RIPs

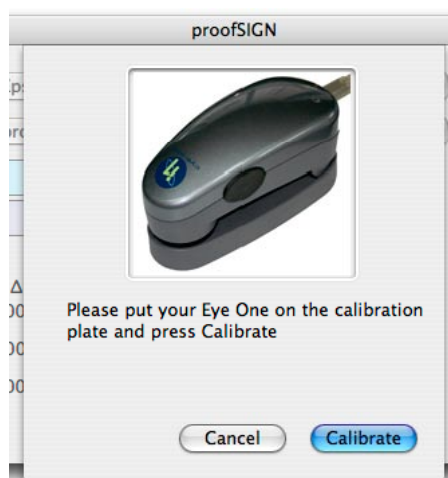
Included on the CD are instructions and the specialised charts for several RIPs. These instructions include how to load the chart into the RIP as an inbuilt chart, so that the RIP can automatically add the proofSIGN chart at the bottom of every proof.

Main window



Calibrating the Eye-One

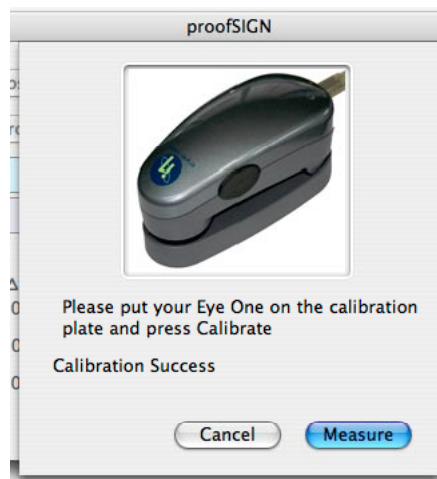
Click 'calibrate' from the main window



Calibrate window



If the calibration wasn't successful, then make sure the Eye-One is sitting neatly on the calibration plate and try again.

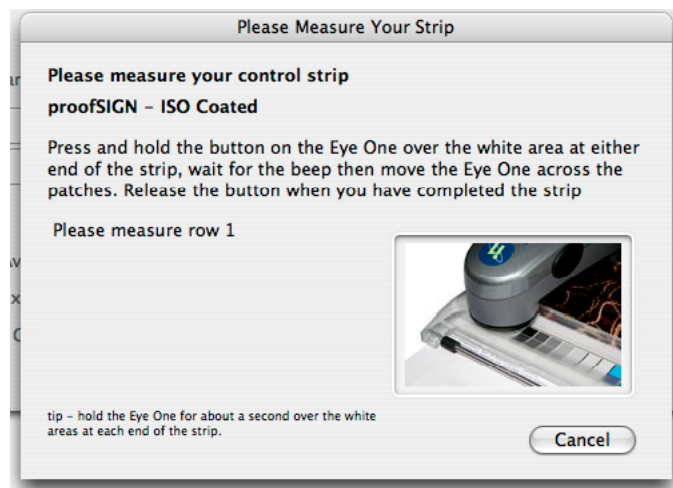


Calibration success

If the calibration is successful, then click on the 'Measure' button.

Starting a new measurement

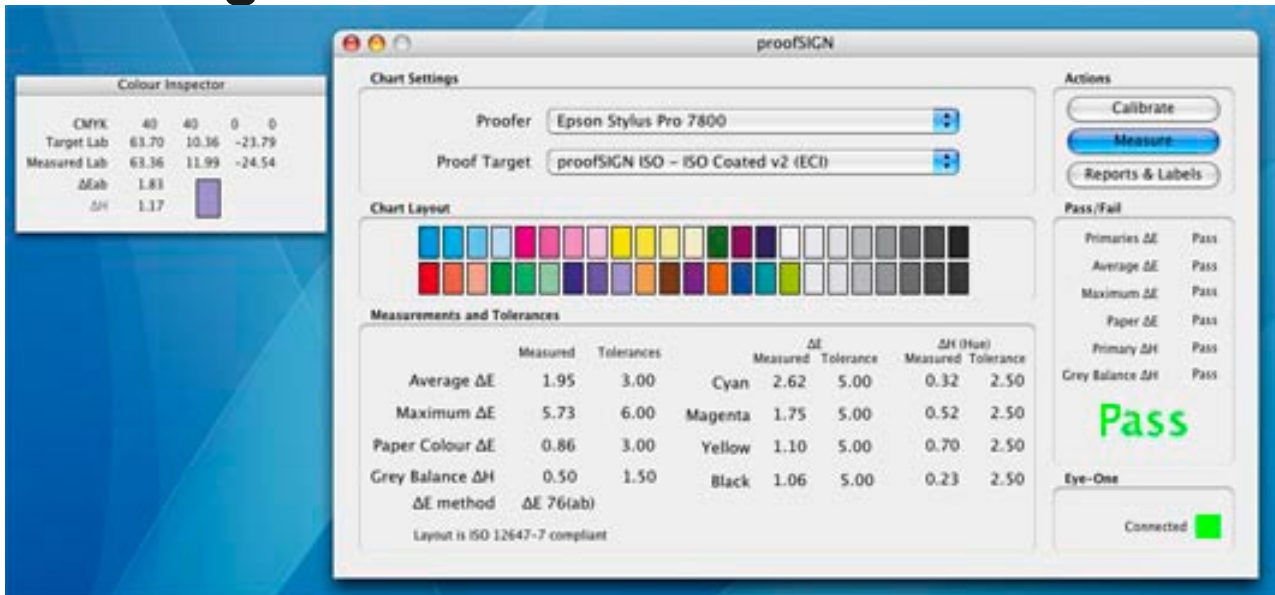
You can start measurement either by clicking on 'Measure' from the main window, or after calibrating the Eye-One.



Measure window

Measure the first line of the control strip as instructed. The most consistent results are when the button on the Eye-One is held over the white area at either end of the strip for a second before moving the Eye-One, and held for a second at the end of the strip. Also smoothness is the key, not slowness. The proofSIGN chart should take about 6 seconds to complete each strip. Repeat for both strips in the chart.

Evaluating Measurements



Main window after measurements

After each line of the control strip has been measured you are returned to the main window, where you can now see the results.

Hopefully your proof has passed and you can look at the ΔE values for each of the patches in the info window.

What does ΔE mean?

ΔE is a measure of how close two colours are. The lower the ΔE , the closer the colours should be visually to each other.

What does ΔH mean?

ΔH is a measure of how close the hue of a colour is to the target. Visually, the hue of a colour - especially neutrals have a large impact on how close we visually see colour differences.

ISO 12647-7

ISO 12647-7 is a proofing verification standard which proofSIGN fully supports.

For a proof to pass ISO 12647-7, it must pass the following conditions:

- Maximum ΔE less than 6
- Average ΔE less than 3
- Maximum Primary ΔE less than 5
- Paper Colour ΔE less than 3
- Average grey balance ΔH less than 1.5
- Maximum ΔH of the CMYK primaries less than 2.5

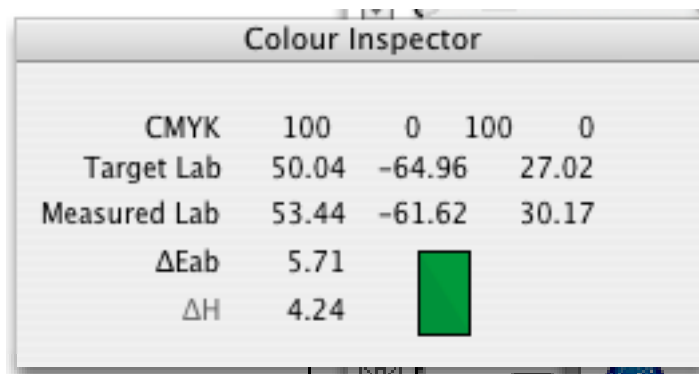
$\Delta E_{76(ab)}$

This is the standard method for calculating ΔE . This method is required for ISO 12647-7 compliance.



Using the info window

The info window shows the measured and target Lab values, the name and CMYK makeup for each patch in the chart. The info window can be shown or hidden by pressing 'Command I' on a Mac, or 'control I' on a PC, or by clicking 'Show Info' from the 'Window' menu.



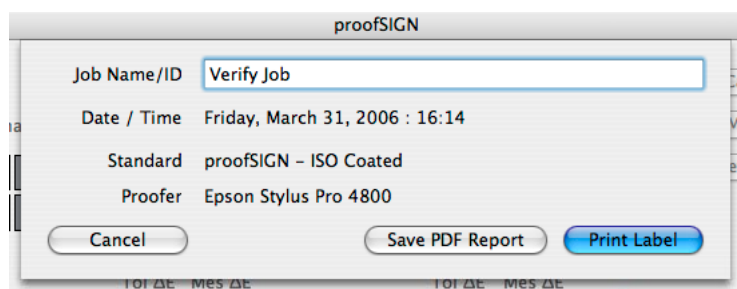
Colour Inspector				
CMYK	100	0	100	0
Target Lab	50.04	-64.96	27.02	
Measured Lab	53.44	-61.62	30.17	
ΔEab	5.71			
ΔH	4.24			

Info window

There is also a colour patch showing the measured colour and the target colour split diagonally across so you can see visually the difference between the target and measured colour. If you can't see a difference, then that's good -the ΔE isn't big enough for you to see a difference on screen.

Viewing the results

When the measurements are complete, then you can print a label, or save a comprehensive PDF report. Click 'View Report' from the main window.

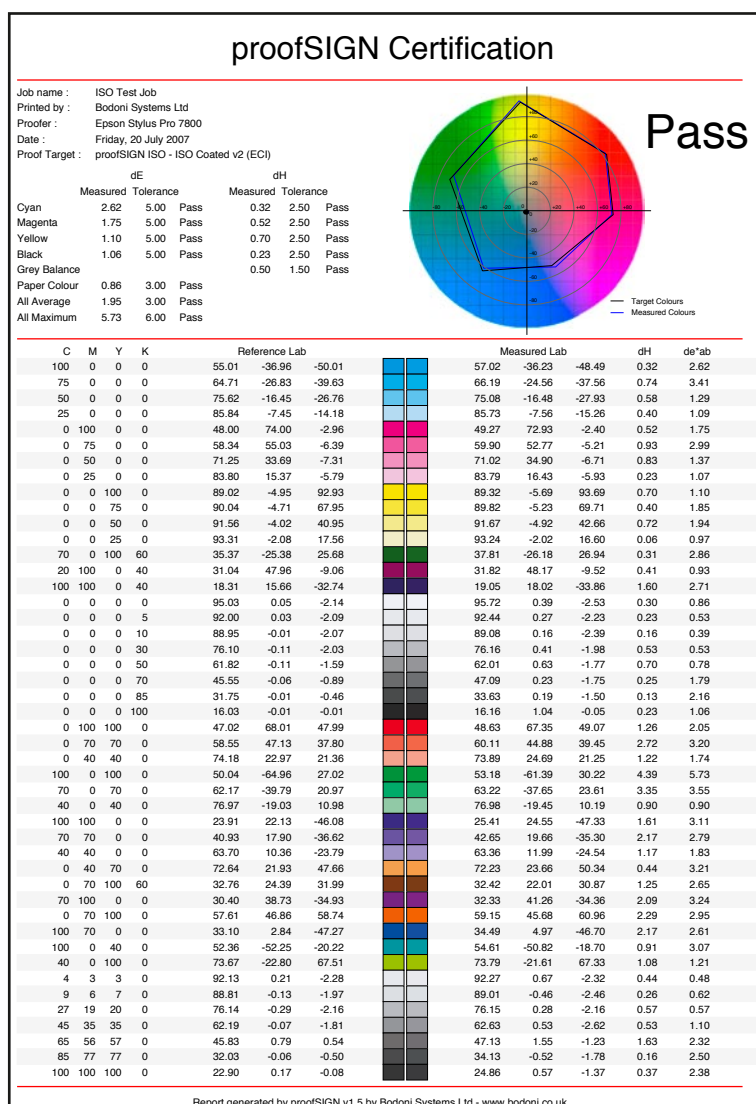


View report window

You can change the Job name/ID if you are printing proofs from more than one source on a single print so that you can nest multiple jobs and only print out a single verification chart per page.

Saving the PDF Report

Click 'Save PDF Report' to save the PDF report that you can keep for your records.



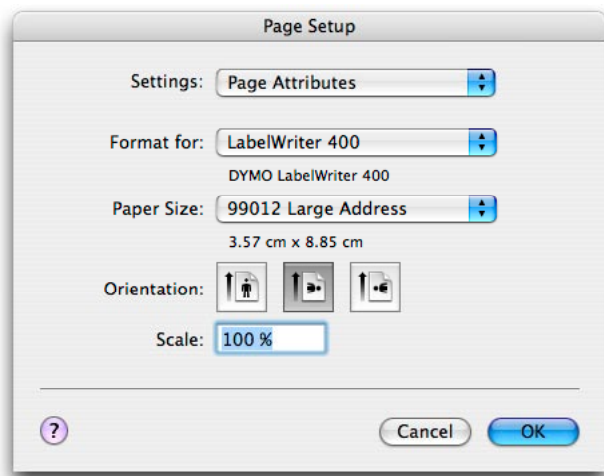
A sample PDF report

The report will automatically open if the preferences are set to do so.

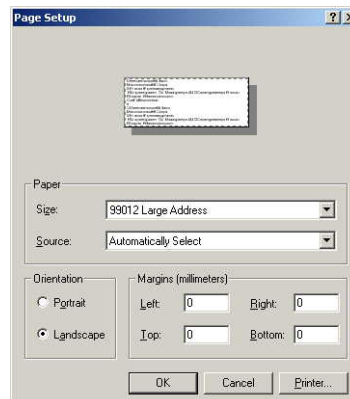
Printing a Label

From the View Results window click 'Print Label'. If this is the first time you have printed a label, and you haven't yet gone into the 'Page Setup' then proofSIGN will automatically open the 'Page Setup Window'

The labels have been optimised for the Dymo Labelwriter 400 'Large Address Label 99012' - 35.7x88.5mm



Page Setup on a Mac



Page Setup on a Windows PC

On a Windows PC, from the Page Setup window click 'Printer'. Select the label printer you are using and click 'Properties'. Select Landscape mode, then click on 'Advanced'. Set the label size as 'Large Address 99012' (or whatever you are using) and click 'OK'. Keep Clicking OK to return to the Page Setup window as shown above and set all the margins to zero. If you are using a different label size than recommended, then you may need to set the margins appropriately.

proofSIGN remembers these settings so that the next time you print a label you don't need to go into the Page Setup window again. If you change label printer or label size, then you can set the page settings from the File menu and selecting 'Page Setup'.

With the page settings set correctly, the print dialog window opens. Make sure the correct printer is selected and click 'Print'

$\Delta E_{76(ab)}$	$\Delta E(5.00)$	$\Delta H(2.50)$	ISO Test Job
Cyan	2.62	0.32	Epson Stylus Pro 7800
Magenta	1.75	0.52	proofSIGN ISO – ISO Coated v2 (ECI)
Yellow	1.10	0.70	Bodoni Systems Ltd
Black	1.06	0.23	Friday, 20 July 2007
Paper	$\Delta E(3.00)$	0.86	
Average	$\Delta E(3.00)$	1.95	
Max	$\Delta E(6.00)$	5.73	
Grey	$\Delta H(1.50)$	0.50	

Pass

Signed

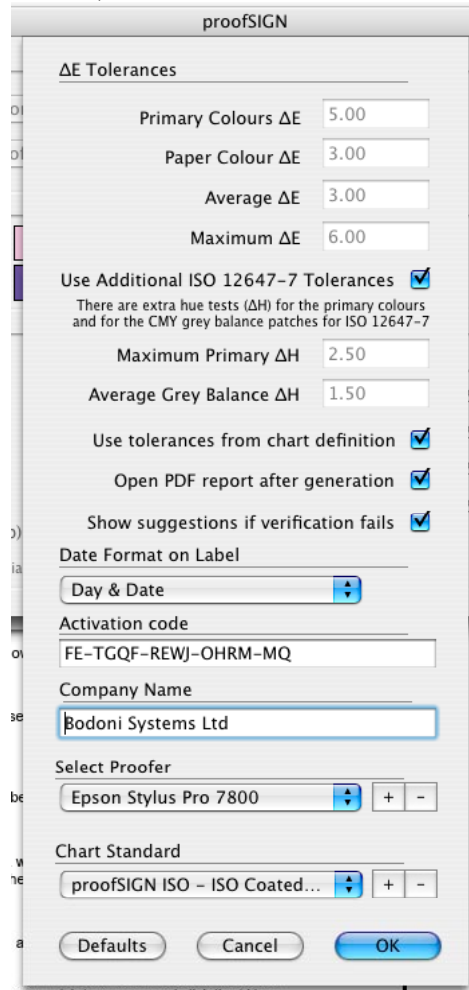
proofSIGN by Bodoni Systems Ltd v1.5.0

proofSIGN Label

The job name, company name, proofer name and chart definition are included on the label as well as the ΔE tolerances and measurements and time of reading.

Preferences

You can open the Preferences by pressing 'command ?' on a mac, or 'control ?' on a PC. You can also goto the proofSIGN menu and select 'Preferences' on a Mac, or the File Menu and select Preferences.



Preferences window

Setting Tolerances

You can alter the pass tolerances for your charts by unchecking 'use tolerances from chart definition' and entering your own tolerances.

Open PDF report after generation

With this option checked the PDF report will auto open after it has been generated.

Show suggestions if verification fails

If you proof fails to be within the set tolerances proofSIGN opens a window to give you suggestions on what you might be able to do to rectify the problem. If you don't want this then uncheck this option.

Adding / Removing Proofers

If you are using more than one proofer to print proofs, you can add another proofer to the list you can select by click on the '+' icon next to the select proofer menu.

If you want to remove a proofer from the list, then select the proofer you wish to remove and click the '-' icon.

Adding / Removing Chart Standards

Click on the '+' icon to add a new chart standard. Look at the section titled 'Adding new Chart Standards'

If you wish to remove a chart definition then click the '-' icon.

Saving Preferences

Clicking 'OK' Confirms any changes you have made. Click 'Cancel' to revert the preferences. Any proofers or Charts you have removed will still be removed.



Adding new chart standards

proofSIGN comes included with chart standards which will verify your proofs to several ISO standards using the FOGRA mediawedge 2.0a , or the supplied proofSIGN chart.

You can use proofSIGN to verify your proof to any ICC CMYK reference profile by adding a new chart standard from the Preferences window.

Open the Preferences window and click on the '+' icon next to 'Chart Standard' to open up the 'Add Chart standard' window

Please select chart layout style

proofSIGN ISO 12647-7

Select ICC Profile

Calculated Lab values for profile

Cyan	Yellow
Magenta	Black
Paper	

Please set chart tolerances

Primary ΔE Tolerance	5.0	Maximum ΔE Tolerance	6.0
Primary ΔH Tolerance	2.5	Paper ΔE Tolerance	3.0
Average ΔE Tolerance	3.0	Grey Balance ΔH Tolerance	1.5

Use default tolerances for chart ☒

Cancel Add

Select the chart layout.

Choose 'ProofSIGN Chart' if you are using the supplied proofSIGN Chart.tif. You can also select 'FOGRA Mediawedge 2.0a' if that is the chart layout you are using.

Select the Profile

Clicking 'Select Profile' and select the CMYK ICC Profile you wish to use.

Please select chart layout style

proofSIGN ISO 12647-7

Select ICC Profile

Calculated Lab values for profile ISO Coated v2 (ECI)

Cyan	55.01	-36.96	-50.01	Yellow	89.02	-4.95	92.93
Magenta	48.00	74.00	-2.96	Black	16.03	-0.01	-0.01
Paper	95.03	0.05	-2.14				

Please set chart tolerances

Primary ΔE Tolerance	5.0	Maximum ΔE Tolerance	6.0
Primary ΔH Tolerance	2.5	Paper ΔE Tolerance	3.0
Average ΔE Tolerance	3.0	Grey Balance ΔH Tolerance	1.5

Use default tolerances for chart ☒

Cancel Add

Once you have chosen a profile the target Lab values are calculated for the CMYK primaries and paper colour.



Setting Tolerances

If it recommended that you use the default tolerances for verifying your proofs.

If you uncheck the 'Use default tolerances for chart' you can change the Δe tolerances for the primaries (the CMYK solids), and the maximum, average and paper colour Δe .

Confirming adding a new chart standard

Once you have selected the CMYK reference profile and have set the desired tolerances click on the 'Add' button. The chart standard is added to the standards list available.

Clicking on 'Cancel' will close the window and no chart standard will be added.